

LEBANON EMERGENCY RESPONSE

ACTIVITY UPDATE #1

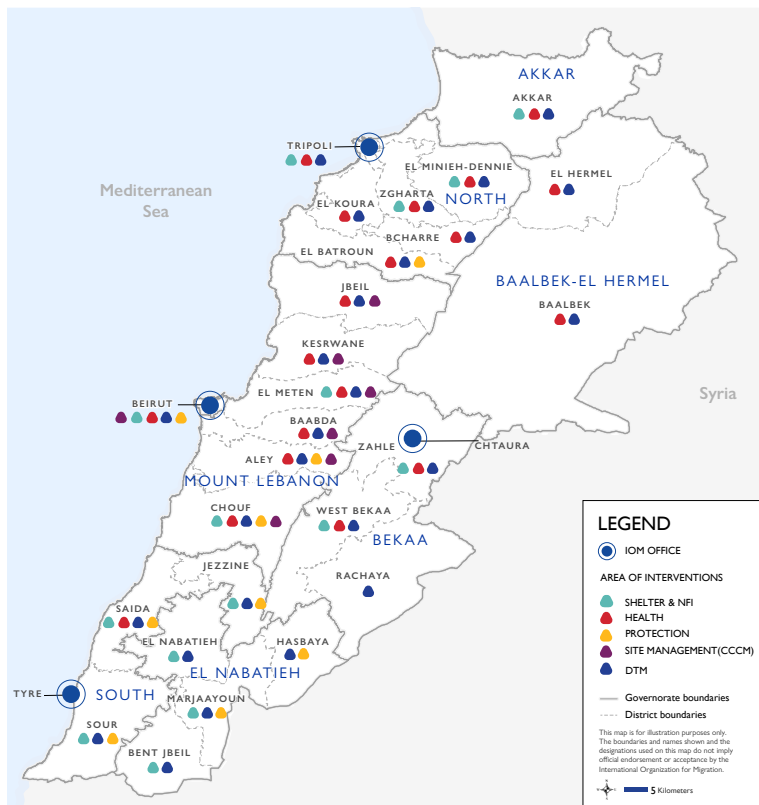
1-17 OCTOBER 2024

SITUATION OVERVIEW

Since the escalation of hostilities in mid-September 2024, displacement has dramatically increased from 110,000 between October 2023 and September 2024 to nearly 800,000 by 16 October 2024. Many families have also sought refuge across borders, particularly in Syria and Iraq. In support of the government-led emergency response, the humanitarian community launched an interagency flash appeal for USD 426 million to assist 1 million people over the next three months. [IOM requires USD 32.46 million](#) for urgent lifesaving assistance in the areas of shelter, basic needs, health, protection, site management and coordination, and the Displacement Tracking Matrix (DTM).



OPERATION OVERVIEW



RESPONSE HIGHLIGHTS

As of 16 October, IOM has identified 779,613 internally displaced persons (IDPs). Approximately thirty per cent of these people are in collective sites, mostly schools or other public or private spaces. IOM coordinates with UNHCR the Site Management and Coordination sector, strengthening the ability of government, UN and other partners to manage these collective sites and ensure timely assistance, protection and services. IOM is responding by providing targeted protection services to displaced people, including the estimated 17,500 migrants who have been forced to flee their homes and places of work. IOM has given core relief items such as blankets, mattresses and pillows to displaced families. So far, the IOM has transported 1,781 displaced people to primary healthcare centres where they receive treatment, medication and other basic supplies. IOM is also working with migrants and embassies to facilitate voluntary humanitarian return. In the past few weeks, we have already received requests to assist over 15,000 migrants in returning to their home countries.

LEBANON EMERGENCY RESPONSE



ACTIVITY UPDATE #1

1-17 OCTOBER 2024

RESPONSE ACHIEVEMENTS



BASIC ASSISTANCE

5,589

individuals received core relief items



SITE MANAGEMENT AND COORDINATION

404

sites assessed by IOM out of 592 assessed by the sector



SUPPORT TO PARTNERS

8,880

core relief items and **12,558** bread bags delivered to support response efforts



HEALTH

1,781

individuals transported to Primary Health Care Clinics

8.5

tons of fuel to Ministry of Public Health



PROTECTION

1,352

individuals provided with case management, MHPSS, legal aid and emergency cash

DISPLACEMENT TRACKING MATRIX

IDPs by district of arrival and district of origin



779,613 (52% female and 48% male)
Total displaced individuals



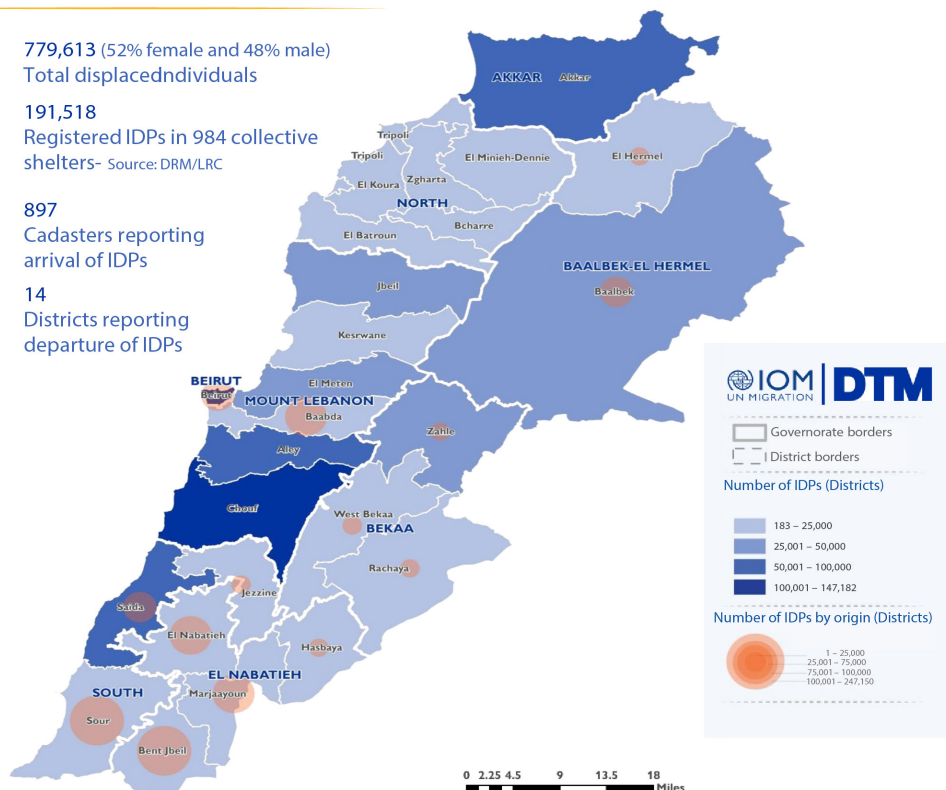
191,518
Registered IDPs in 984 collective shelters- Source: DRM/LRC



897
Cadasters reporting arrival of IDPs



14
Districts reporting departure of IDPs



IOM is grateful for donors that have reached out and initiated discussions on funding IOM's Appeal for critical life saving support, including the governments of the United States, France, Netherlands and the United Kingdom, and the UN Central Emergency Response Fund who have already been supporting IOM's response efforts since October 2023.